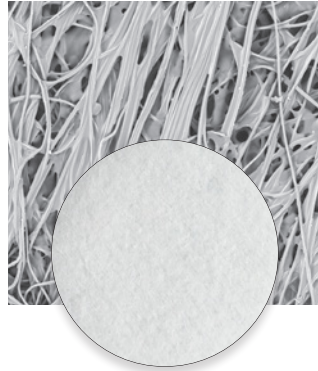


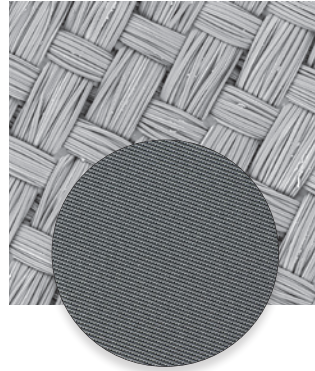
**MD-Plan & DP-Plan**

- Version for magnetic fixation (MD) or self-adhesive (DP)
- Coarse polishing of soft metals
- Fine polishing of hard materials
- Woven
- Diamond 15 - 3 µm



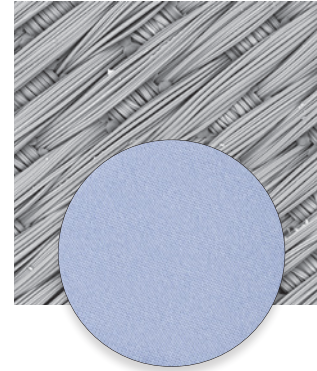
**MD-Pan & DP-Pan**

- Version for magnetic fixation (MD) or self-adhesive (DP)
- Coarse polishing of soft metals
- Fine polishing of hard and brittle material
- Non-woven
- Diamond 15 - 1 µm



**MD-Sat & DP-Sat**

- Version for magnetic fixation (MD) or self-adhesive (DP)
- Coarse and fine polishing of ferrous metals, non-ferrous metals and coatings and plastics
- Woven
- Diamond 9 - 3 µm



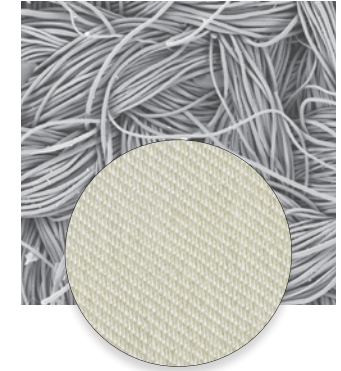
**MD-Dac & DP-Dac**

- Version for magnetic fixation (MD) or self-adhesive (DP)
- Coarse and fine polishing of all materials
- Woven
- Diamond 9 - 3 µm



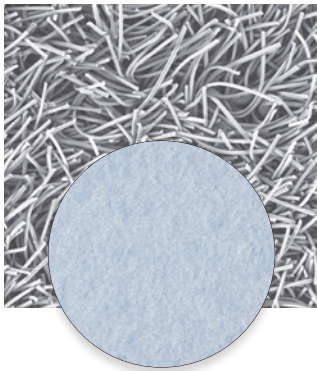
**MD-Dur & DP-Dur**

- Version for magnetic fixation (MD) or self-adhesive (DP)
- Coarse and fine polishing of ferrous metals, non-ferrous metals, coatings, ceramics and plastics
- Woven
- Diamond 9 - 1 µm



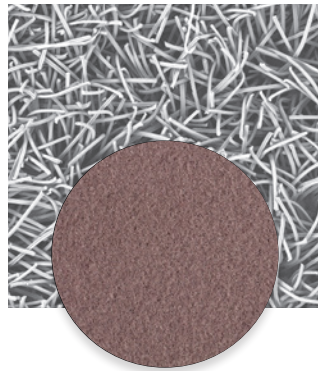
**MD-Mol, MD-Mol APS & DP-Mol**

- Version for magnetic fixation (MD) or self-adhesive (DP)
- Version available (MD-Mol APS) for fully automated preparation equipment
- Fine polishing of ferrous and non-ferrous metals and polymers
- Woven
- Diamond ≤ 3 µm



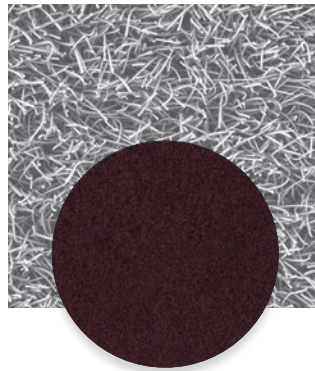
**MD-Plus & DP-Plus**

- Version for magnetic fixation (MD) or self-adhesive (DP)
- Fine polishing of sintered carbides and steels
- Napped
- Diamond 3 µm



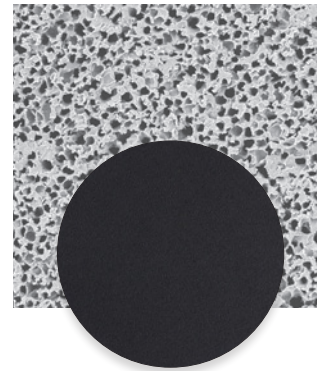
**MD-Floc & DP-Floc**

- Version for magnetic fixation (MD) or self-adhesive (DP)
- Fine and ultra-fine polishing of all materials
- Napped
- Diamond or oxide polishing ≤ 3 µm



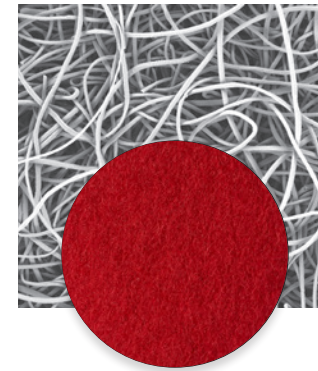
**MD-Nap & DP-Nap**

- Version for magnetic fixation (MD) or self-adhesive (DP)
- Fine and ultra-fine polishing of all materials
- Napped
- Diamond or oxide polishing ≤ 1 µm



**MD-Chem & OP-Chem**

- Version for magnetic fixation (MD) or self-adhesive (DP)
- Version available (MD-Chem NonStick) to avoid suction of large specimens
- Ultra-fine polishing of all materials
- Woven
- Oxide polishing ≤ 1 µm



**OP-Nat**

- For self-adhesive fixation
- Coarse, fine and ultra-fine polishing of ferrous metals
- Woven
- Alumina ≤ 9 µm



**OP-Felt**

- For self-adhesive fixation
- Coarse, fine and ultra-fine polishing of non-ferrous metals
- Alumina ≤ 9 µm