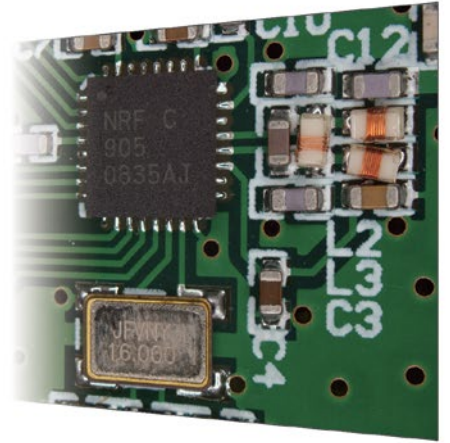
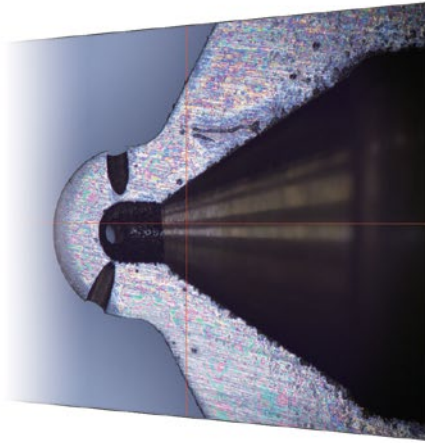
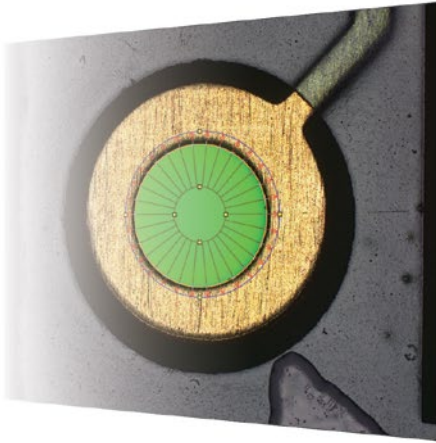


A Microscope that Measures Up to Individual Needs



The Measuring Microscope Engineered to Fit Your Needs

Whether samples are small or large, simple or complex, or measurements are being taken by a novice or an expert, the Olympus STM7 range features measuring microscopes tailored to fit your needs.



STM7-LFA configuration

INDEX

■ Wide Coverage

Compatible with a range of measurement and observation needs P.3

■ Operability

Simple, efficient operation P.5

■ Height Measurement

Accurately measure samples with irregular surface P.8

■ Advanced Measurement Software

Measure complex forms simply and accurately P.10

■ Suggested Models

Five STM7 suggested configuration P.15

STM7 Series

Stage Selection (in mm)

100 x 100, 200 x 200, 300 x 300

Optics

Measuring Objectives/
Metallurgical Objectives

Frame

Manual Focus/
Motorized Focus

Focusing Equipment

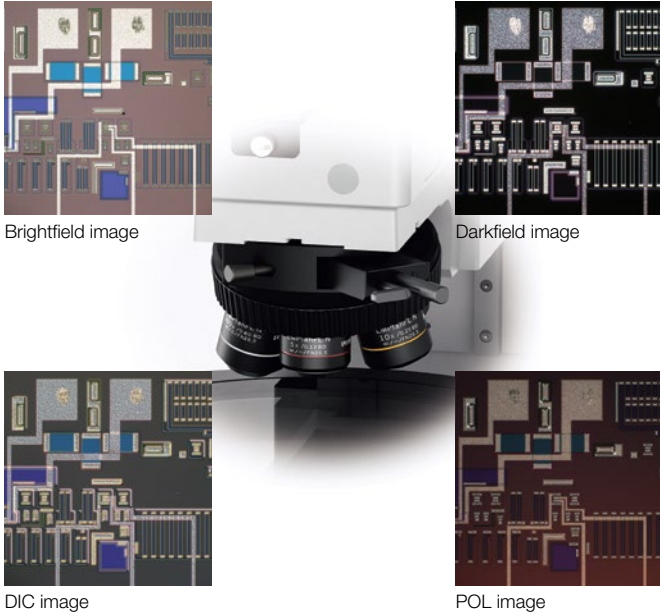
Manual Focus Navigator Unit/
Autofocus Unit

Olympus Measurement
Software

Accurate Measurements

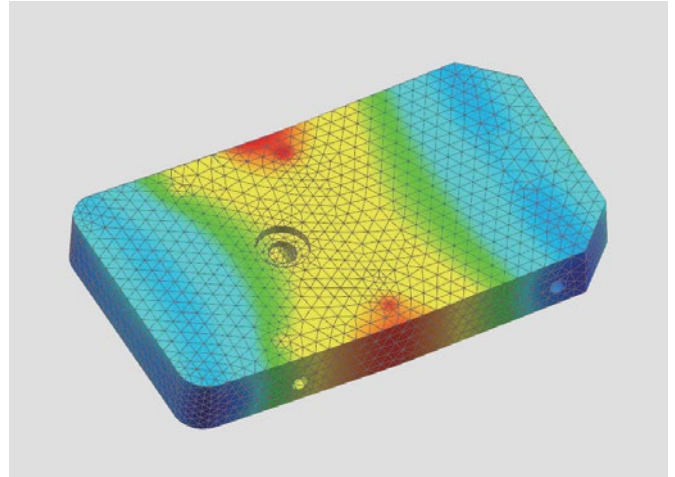
Refined Optical Performance

The STM7 series uses the same UIS2 infinity-corrected optical system used in state-of-the-art optical microscopes. As a result, observed images have high resolution and high contrast, with aberration thoroughly eliminated to help ensure highly accurate measurement in minute detail.



Reliable Measurements with a Stone Stage-Mounting Plate

To provide further assurance of measurement accuracy, the STM7 series uses a highly durable, vibration-resistant frame with a granite surface plate. As a result of this stability, measurements can be taken at sub-micron-levels while ensuring minimal error.

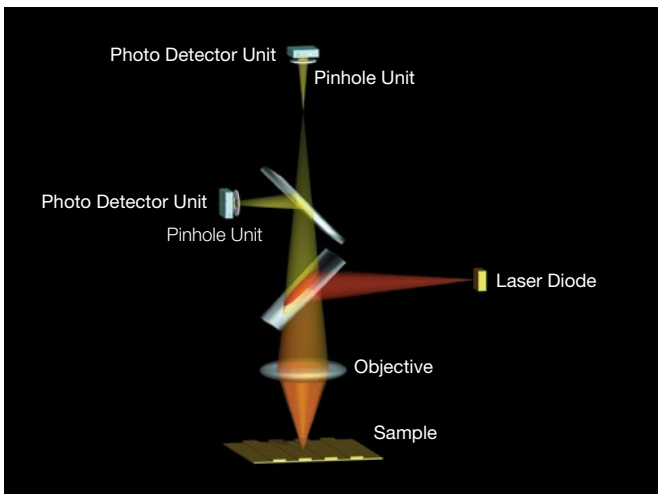


STM7-LF FEM analysis

Provide User-friendly, High-Precision, 3-axis Measurement

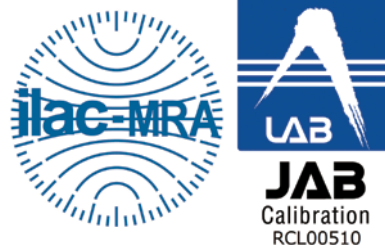
As modern manufacturing technology becomes increasingly miniaturized and precise, highly accurate measurements are even more essential—not only along the XY axes, but also along the Z-axis. We have responded to such needs by being the first to realize an autofocus system for measuring microscopes by means of the reflective active, confocal method.

Reflective Active, Confocal Autofocus System Optical Path



Dependable Quality Based On a Strict Traceability System*

The accuracy of Olympus' measuring microscopes is controlled by a strict traceability system and we even offer traceable calibration at the time of installation.



* Calibration certificate issued by Olympus Corporation Test & Analysis Center, and authenticated by ILAC-MRA calibration accreditation agencies (JCSS, JAB).

* Traceability systems vary depending on periods and countries/regions. The samples used in STM7 calibrations are calibrated in each country/region. Please ask us for details.

Wide Coverage: Stage

Stages that Fit Your Samples



Common Problems

Short measurement stroke precludes the measurement of larger samples.

Sample rotation required to compensate for shorter Y than X-axis coverage during measurement is time inefficient. Until now, large stages have offered a sufficient measurement coverage on the X-axis, but only less coverage on the Y-axis.

Due to the narrow measurement range, it is impossible to line up large numbers of samples on the stage for measurement at once.



STM7 Solutions

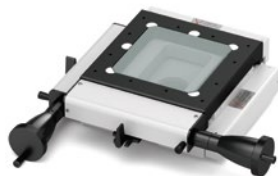
The STM7 features a 300 mm x 300 mm stage capable of measuring large samples, including 300 mm wafers and printed circuit boards.

X and Y-axis measurement areas are long and of equal length, eliminating the need to rotate samples.

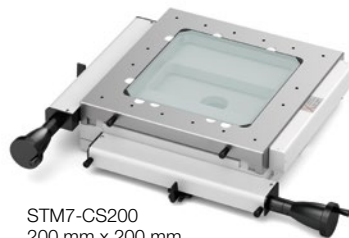
Long measurement areas for both the X and Y-axis allow multiple samples to be lined up on the stage for more efficient measurement.

Maximum Measurement Stroke 300 mm x 300 mm

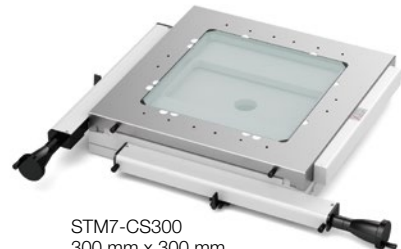
Three types of stages are available, each with a unique square measurement stroke (choose from 100 mm x 100 mm, 200 mm x 200 mm, and 300 mm x 300 mm). From small to large size samples, there is a stage that fits the sample being measured.



STM7-CS100
100 mm x 100 mm



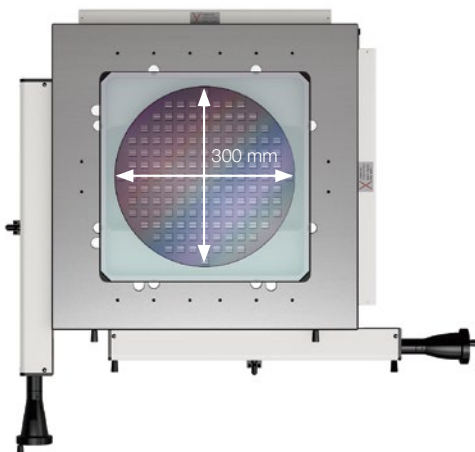
STM7-CS200
200 mm x 200 mm



STM7-CS300
300 mm x 300 mm

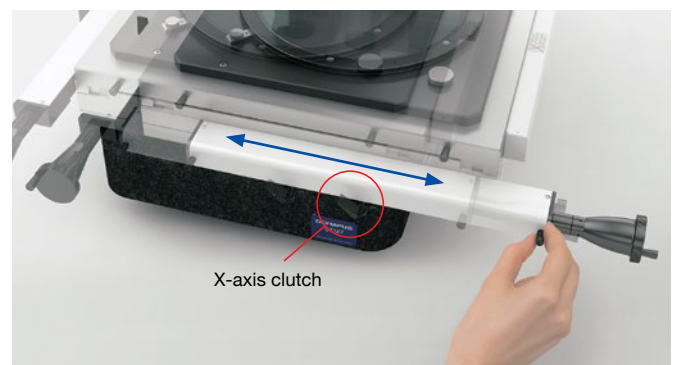
Square Stroke Makes Measuring Large Samples Easier

The 300 mm square length stage enables the same measurement stroke to apply to both the X and Y-axes, which means it can be used to measure large samples, such as 300 mm wafers and printed circuit boards without changing their orientation.



Quickly Switch Between, Coarse and Fine Movements

A clutch system enables rapid switching between coarse and fine movements. Thanks to this switching function, the stage can also be moved rapidly along the X- and Y-axes, and freely across the XY plane.



X-axis clutch

Broad Range of Magnifications and Working Distances



Common Problems

Most conventional measuring microscopes only accept a measuring objective or metallurgical objective, and so are unable to meet the requirements for a wide variety of observations.

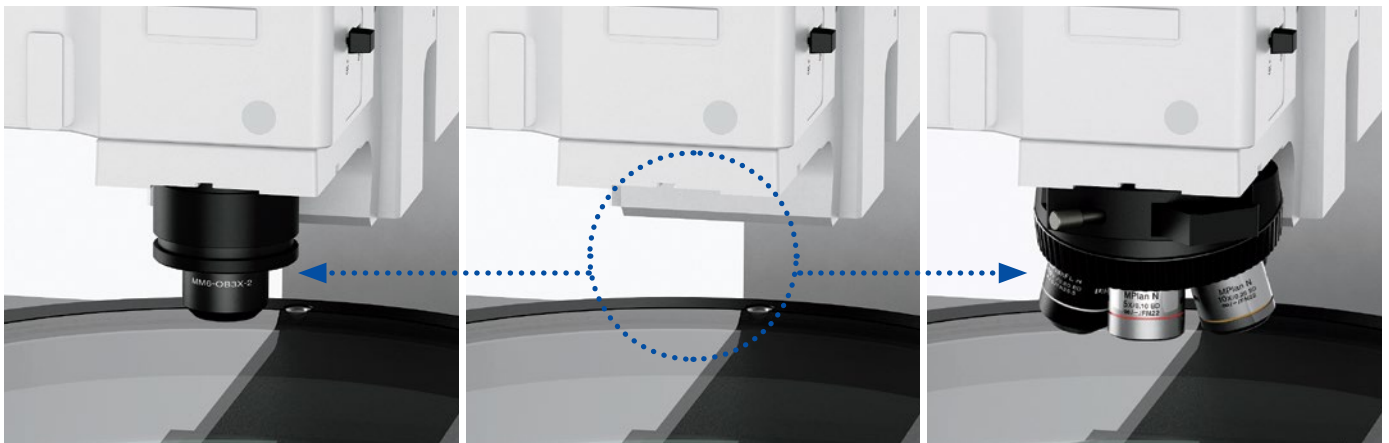


STM7 Solutions

The STM7 meets the requirements of a wide variety of observations. It responds to your needs at both low and high magnifications, enables the measurement of uneven samples requiring ultra-long working distance objectives, and even offers a variety of observation methods.

Low- and High-Magnification Observations

The STM7 accepts both a metallurgical objective and a measuring objective by exchanging a revolving nosepiece with a measuring objective adapter. This means that the STM7 combines both metallurgical optics and measuring optics in one microscope. In this way, the STM7 series satisfies a range of needs, whether measuring a wide area or tiny region, measuring the size of differences between levels, or assisting the user in deciding on the best observation method to choose.



Measuring Objectives

Because the measuring objectives have an extremely long working distance, they provide confidence when focusing on samples with large peaks and troughs while reducing worries of the objective coming into contact with the sample. Furthermore, their low-magnification capability enables wide areas to be observed in a single view.



Brightfield image

Metallurgical Objectives

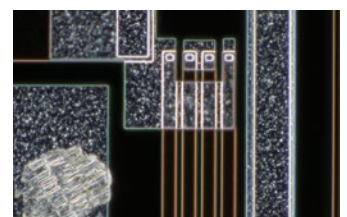
Metallurgical objectives enable high-magnification, high-resolution observation comparable to that of optical microscopes. What's more, these objectives can be used for brightfield, for darkfield and DIC observation.



Brightfield image

STM7-MMOBAD: Measuring Objective Mount Adapter

Use of the STM7 measuring objective mount adapter measuring objective adapter enables a measuring objective to be used even in a metallurgical objective optical system.



Darkfield image

Operability: Measuring Microscope Operation

A Revolutionary Control Unit Refines Usability



Common Problems

Additional functions require additional operational units. Operators can't always locate the corresponding unit quickly, which significantly reduces measurement efficiency.

Numerous operational units and their power supplies around the main unit occupy valuable working space.



STM7 Solutions

Almost all measuring microscope operations can be efficiently completed on the nearest operational unit.

The system requires only a single operational unit and power supply, regardless of how many functions are added, freeing up workspace.

Controllers

With the STM7 series, a single controller makes it possible to perform virtually all measuring microscope operations, including use of readout reset, illumination control, focusing, and autofocus. For efficiency and convenience, the unit can be placed wherever you wish and operated easily with one hand.



For Manual Z-axis Focusing Models:
STM7-HS Hand Switch



For Motorized Z-axis Focusing Models:
STM7-MCZ Focus Controller

Control Box

The power supply and transmission for each unit are combined in a single control box. This preserves maximal workspace even when a range of optional functions, such as the focus navigator, are added.

Manual and Motorized Focusing Model Lineup

Focus control is available with either manual or motorized operation. Choose the model that addresses your needs in terms of samples and measurement content, regardless of stage size—with all frames incorporating a linear scale for the Z-axis that enables 3-axis measurement.



Manual Z-Axis Focus Models

Manual Z-axis focus models offer excellent cost performance—with familiar handle operation for rapid vertical movement that offers convenience for users who need to measure samples with variety of heights.



Motorized Z-Axis Focus Models

Operability is improved and handling fatigue is reduced for focus and height measurements when using the motorized focus unit. The coaxial knobs for coarse and fine movement offer a feeling similar to manual operation, while the models can also be equipped with an autofocus unit.

Automatic Light Intensity Adjustment Improves Observation and Measurement Efficiency



Common Problems

Analog volume adjustment used by conventional measuring microscopes does not enable the quantitative assessment of light intensity, which can lead to variability in measured values as light intensity changes.

With conventional measuring microscopes, light intensity may need to be adjusted every time the objective is switched—making for an inefficient workflow.



STM7 Solutions

Observations and measurements can always be performed under the same conditions thanks to the STM7's quantitative display of light intensity value.

Illumination method and light intensity are automatically adjusted to the preset value when the objective is switched, whenever the light intensity manager is used in combination with a coded revolving nosepiece.

Precisely Control Light Intensity Values with a Quantitative Digital Display of

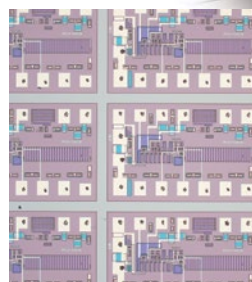
The STM7 series provides a quantitative digital display of light intensity—enabling observations to always be made under consistent illumination conditions.



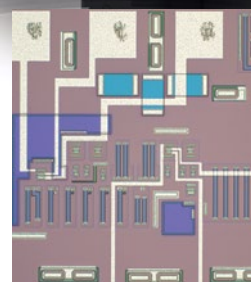
Digital display shows quantitative light intensity

No More Manual Adjustments

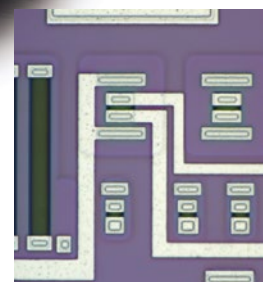
Light intensity manager can be used with the coded revolving nosepiece configuration. The coded revolving nosepiece automatically detects the switching of objectives. This allows the illumination method and light intensity to be registered for each objective and adjusted automatically during measurements when the objective is switched. Now there is no need to manually adjust light intensity, which used to be required with every switch between magnifications.



5X
Intensity 50



20X
Intensity 70



100X
Intensity 120

Operability: Digital Read Out

Check Measurement Results and Equipment Status Fast with a Detachable Digital Readout



Common Problems

The need to check the operation status of equipment, such as illumination, or measured values on individual units makes overall operation cumbersome.

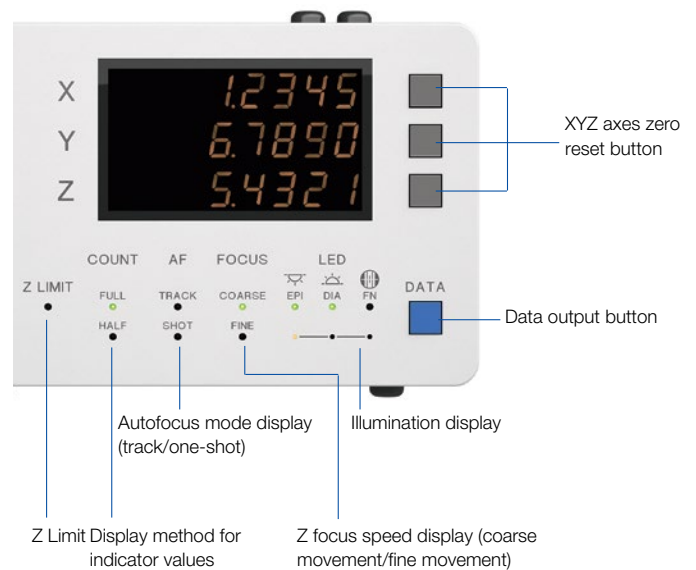


STM7 Solutions

The STM7 series displays microscope status, such as illumination, together with measured values on an indicator display area, for easy checking at a glance.

Fast, Visual Status Check

The indicator displays the device status and settings. The minimum X, Y, and Z-axis values can be switched between 0.1 μm and 1 μm , and the display units can be switched between mm, μm , inches and mil.



Detachable Digital Readout Enables Individual Preference and Placement

Whether attached to the frame or a desk, the placement of the detachable digital readout is up to the individual user. While standing to take measurements, it can be placed on the side of the frame at almost the same height as the site of observation for an exceptional and easy view. When operating from a sitting position, such as observation or measurements on a monitor via a digital camera or when using the motorized Z-axis focusing model, simply place the digital readout and hand controller on the desk.



Digital readout attached to the frame



Digital readout placed on a desk

Faster, Simpler, More Accurate Height Measurement



Common Problems

When doing visual measurement, variations can arise in the height measurements between different operators. Furthermore, this measurement method is time-consuming and inefficient.



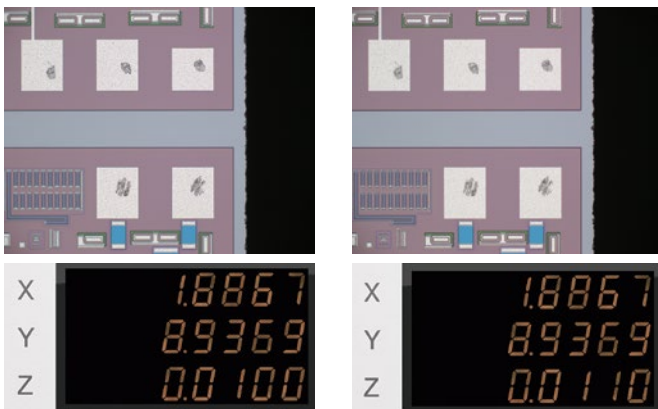
STM7 Solutions

The STM7 focus navigation system reduces the operator subjectivity in height measurements. It also shortens the time required to perform height measurement to achieve greater efficiency.

Simple, Precise Focusing System with Superior Repeatability

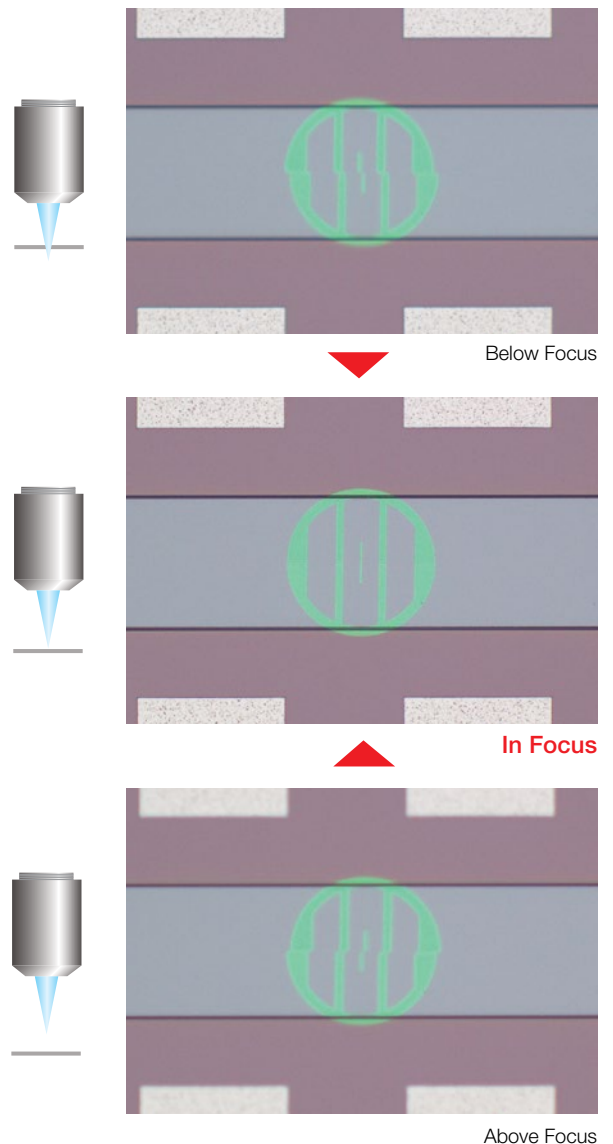
Olympus' focus navigator delivers highly reproducible height measurement by projecting a pattern within the field of view and identifying vertical deviations. Slight errors can occur in height measurements taken with normal visual observation, even when focus appears to be sharp. The focus navigator, however, enables measurements to be made simply by matching up the marks—thereby reducing operator subjectivity in measurement results.

Visual Height Measurement



Operator subjectivity at the position at which measurements are taken can introduce differences in measurement results.

Focus Navigator



Autofocus Advantage for Fast and Highly Accurate Height Measurement



Common Problems

During visual measurement, the results of height measurement can vary between different operators.

Manual height measurement requires the operator to repeatedly move the stage and adjust the focus with the handle, making measurement time-consuming and inefficient.

Focusing on minute objects, such as bonding wires, is difficult.



STM7 Solutions

With use of the autofocus unit, the measured value remains highly accurate regardless of the operator.

In TRACK mode, the image is automatically and continually kept in focus, enabling efficient height measurement in minimal time. The same mode renders manual focusing unnecessary for XY measurements, resulting in even more efficient operation.

When a 100X objective is used, the laser spot diameter can be as small as 1 μm , permitting autofocus to be used locally, even on extremely minute objects.

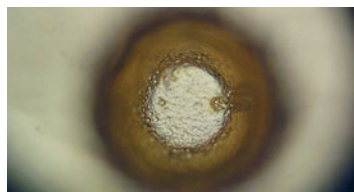
Fast, Accurate, Unbiased Focusing and Measurement

We have developed a dedicated autofocus unit for the STM7 series that delivers excellent reproducibility and rapid focus. As a result, highly accurate height measurements can be made within a short amount of time, irrespective of the level of operator experience.



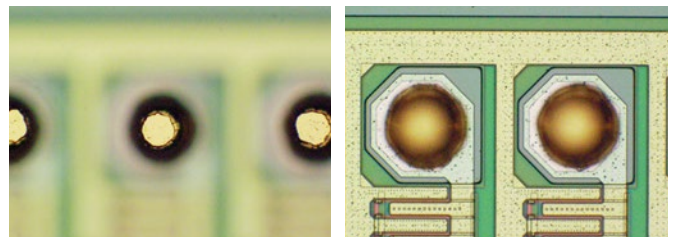
One-Shot Mode

Instantaneously takes autofocus from a roughly focused state to sharp focus located at the center of the field of view.



TRACK Mode

The TRACK Mode provides autofocus that tracks the peaks and troughs of the sample, even if the stage is moved, keeping the image continually in focus. This advancement greatly improves the efficiency of Z-axis measurements by enabling observations to be made without taking your hands off the X and Y handles.



Dedicated Autofocus Unit: Outstanding Reproducibility and Focusing Speed

The STM7 autofocus unit allows highly accurate height measurements to be made with minimal time, regardless of the level of operator experience. Use of the reflective active, confocal method provides a stable focal point independent of surface roughness or a slanting sample surface, while the small laser diameter enables the use of autofocus, even on minute objects, such as bonding wires.

Measure Complex-Shaped Objects Accurately, Quickly, and Simply

The ability to clearly and easily see the output display component of measuring microscopes is essential. That is why the new Olympus measuring software has been created, helping to deliver complex measurements with greater accuracy. The software also enables the use of digital cameras.

STM7-BSW Sample GUI

The screenshot shows the Olympus STM7-BSW software interface. A central live image display shows a circular object on a textured surface. To the right, a 'Digital Indicator' shows X: +12.6091 mm, Y: +5.3433 mm, and Z: +0.0000 mm. Below it, a 'Measurement items' panel contains icons for various measurement types. A 'List' panel shows a table of measurement results. Callouts point to the 'Live Image Display', 'Edge Tool Bar', 'Graphic' (which shows measured points and lines), 'Measurement Menu', 'Measurement Results', and 'List' (which shows the measurement procedure).



STM7 with Measurement Support System

Available Cameras

High - performance model with high speed live display

DP28

Image resolution 4104 × 2174
 Frame rate 15 fps (max.)
 PC interface USB 3.1 Gen1



DP23

Image resolution 3088 × 2076
 Frame rate 25 fps (max.)
 PC interface USB 3.1 Gen1



Introductory model with high price-performance ratio

STM7-CU

Image resolution 2048 × 1536
 Frame rate 11.2 fps (max.)
 PC interface USB2.0



Place the Sample and Start to Measure – No Parallel Alignment Required

Direct Measurement

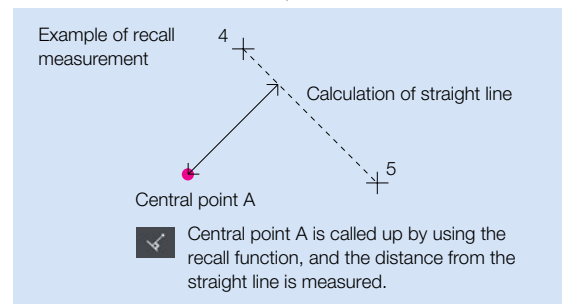
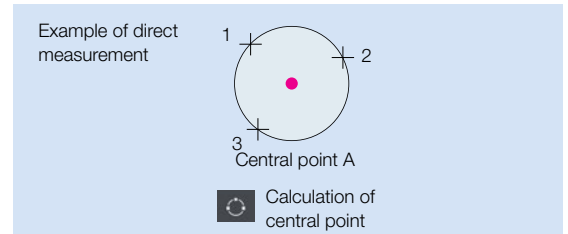
Measurements are made by receiving coordinates input via the STM7.

Direct measurement Recall measurement	
	Point
	Line (angle)
	Circle
	Rectangle
	Midpoint
	Distance between point and point
	Height between point and point
	Plane
	Ellipse

Recall Measurement

Once measured and calculated, coordinates can be used again for subsequent measurements. This eliminates the need to carry out the same work twice, enabling a smoother and more efficient workflow.

Recall measurement	
	Intersection between line and line
	Center line
	Distance between point and line
	Height between point and plane
	Intersection between line and circle
	Intersection between circle and circle
	Contact point between point and circle



Virtual Point Measurement

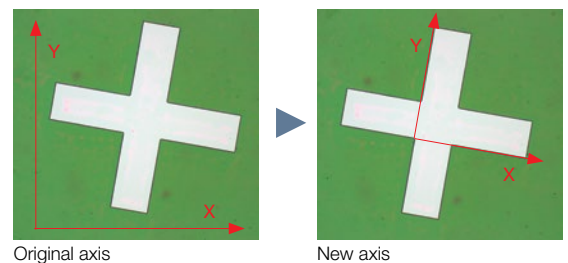
Intersections, central points, lengths, and a range of other measurements can be made by drawing straight lines and circles, which can then be set to remain as reference points on acquired sample images.

Virtual point	
	Virtual point
	Move point
	Rotate point
	Point of symmetry in the X axis
	Point of symmetry in the Y axis
	Point of symmetry in the origin

Alignment Measurement

Both the origin and the X-axis are set with respect to the sample, allowing the sample to be measured even when it's not aligned with the stage.

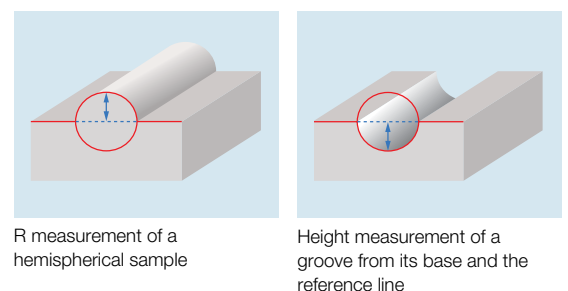
Alignment	
	Origin
	X-axis
	Move origin
	Tilt



XZ Plane Measurement

Conventional measuring microscopes measure the XY plane directly from above. However, in response to user demands, Olympus has incorporated an XZ plane measurement function in the STM7-BSW to enable the measurement of cross-sections as seen from the side. Now, measurements that used to be difficult are much easier – such as radius measurements for vertical sections of hemispherical objects, or measurement of the depths of grooves with curved bases compared to a reference line.

XY measurement	
	Line (angle)
	Circle
	Distance between point and point
	Intersection between line and line
	Center line
	Distance between point and line
	Distance between line and circle (upper)
	Distance between line and circle (lower)



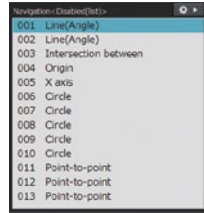
Record Repeated Measurement Procedures

Macro Registration

Frequently used alignment and other measurement procedures can be combined and assigned to a single macro button—eliminating the need to start from scratch each time the microscope is set up.

Replay Measurement

Measurements can be easily repeated based on a recorded workflow by simply inputting the movement of the stage and the coordinates in response to a software prompt. This function can be used to repeatedly carry out the same measurement on the same sample, or different versions of the same sample. Furthermore, if a set value and tolerance are set in the recorded workflow, the software can automatically identify when a measurement has failed.

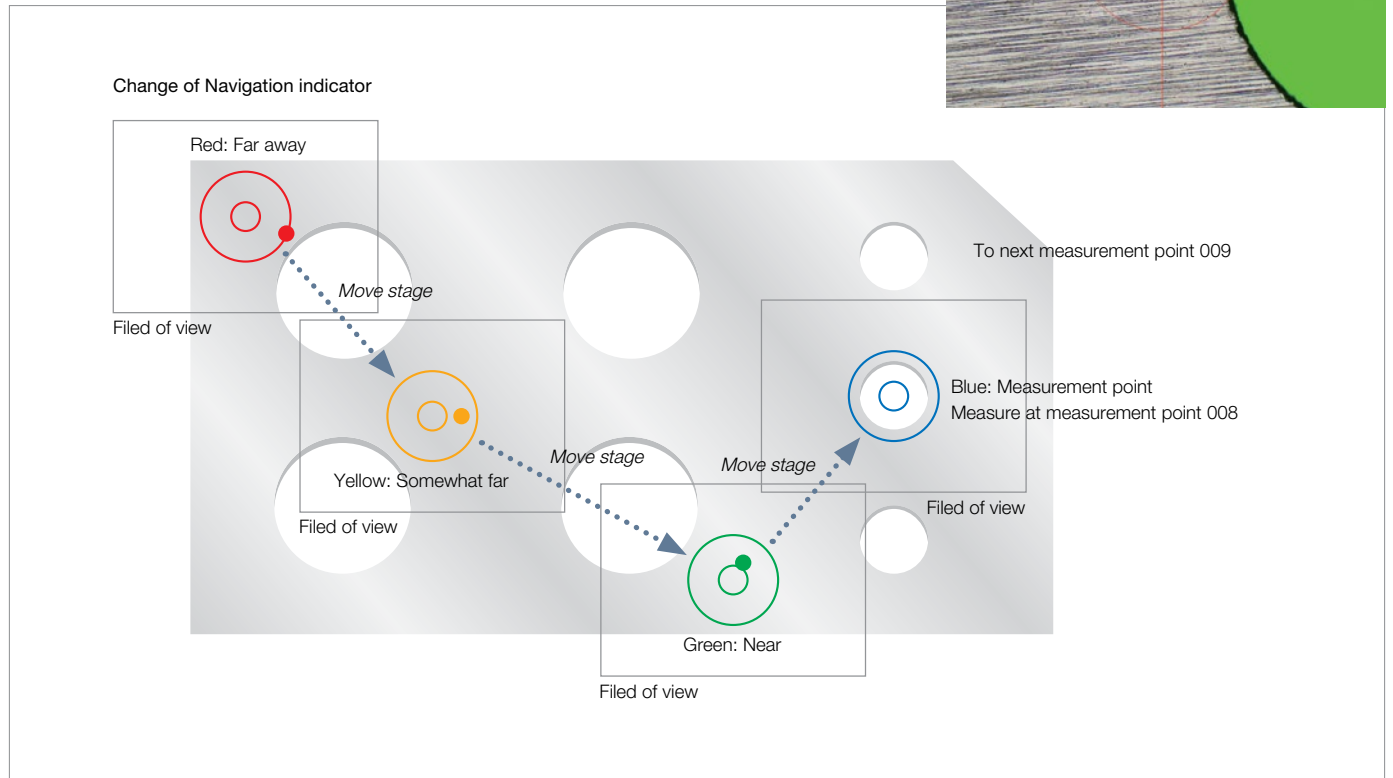
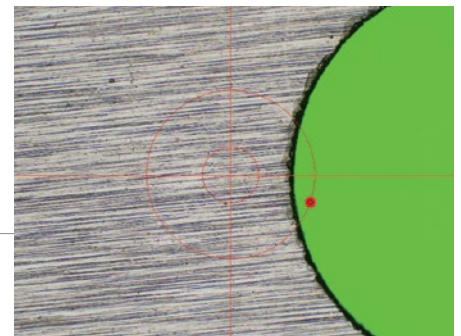
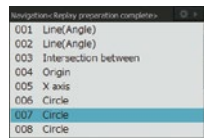


Number	Measurement	Items	Sample1	Sample2	Sample3	Stat
006	Circle	D diameter	2.0297	2.0511	2.0288	
007	Circle	D diameter	2.1352	2.0588	2.0521	
008	Circle	D diameter	2.6642	2.6457	2.6531	
009	Circle	D diameter	2.6699	1.9923	2.0680	
010	Circle	D diameter	4.0411	4.0433	4.0499	
011	Point-to-point	Distance	3.8562	3.9377	3.9419	
012	Point-to-point	Distance	6.6386	5.5118	6.5984	
013	Point-to-point	Distance	4.6149	4.6639	4.6138	

Fail/results sample

Measurement Point Navigation for Replay Measurement

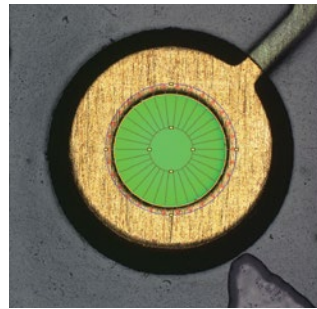
This function displays the direction and distance to the next measurement point, thereby eliminating any confusion on the part of the operator. The function additionally eliminates the need to check the next measurement point on the diagram each time, speeding the operator's workflow through a series of repeated measurements.



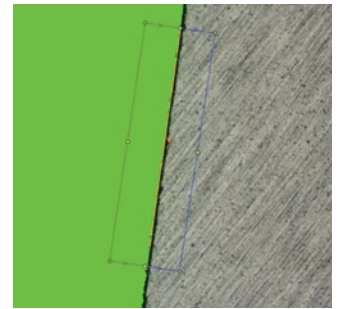
Convenient Functions Help Eliminate Subjectivity in Measurement

Automatic Edge Detection

This function detects the edges of the sample and automatically acquires and measures its coordinates. As a result, operators no longer need to designate the coordinates and subjectivity is minimized. Automatic Edge Detection also features a timer function that enables coordinates to be acquired in a specified time and supports the use of a foot switch that enables the operator to focus on measurement operations without taking his or her hands off the stage handles.



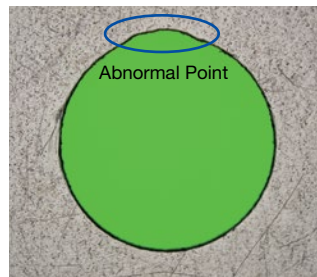
Automatic edge detection inside the circle



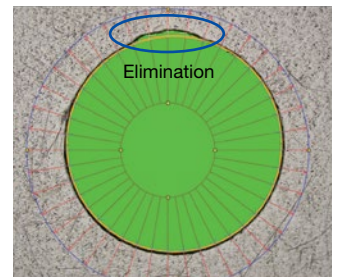
Multiple points automatic edge detection

Abnormal Point Elimination

Metal burrs and other abnormal points can be excluded automatically during edge detection. This enables a consistent calculation of measured values, irrespective of the state of the sample. Points excluded as abnormal can also be displayed on the screen in different colors.



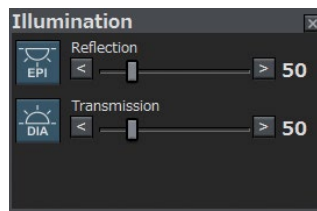
Sample with abnormal point



Abnormal point elimination

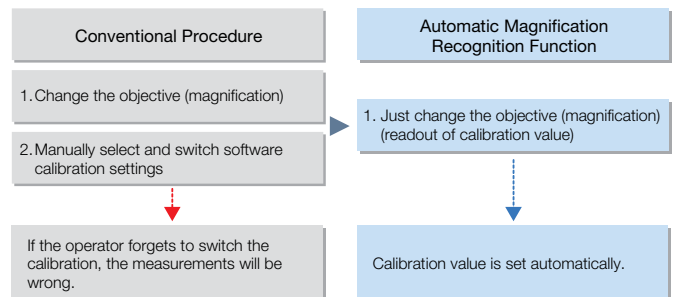
Illumination Control

The light intensity of the microscope can be maintained by accurate software control. Light intensity settings can also be saved when recording a workflow enabling measurements to be made under the same conditions during replay measurements or automatic edge detection.



Automatic Magnification Recognition (optional, with coded revolving nosepiece configuration only)

Through use of the coded revolving nosepiece, previously set calibration values are automatically recalled when changing the objective. In this way, the user can be confident that the proper scale is on display.

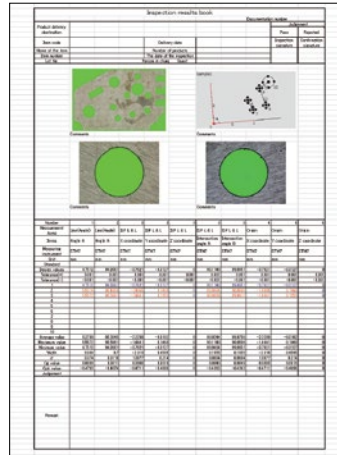


Measurement Support Software

Customizable Report Generation

One-Click Report Generation

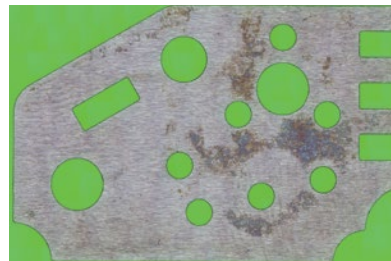
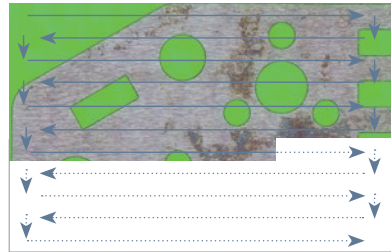
Measurement results can be output in Excel format with a single click, eliminating mistakes made during transcription. Images can also be pasted in along with the measurement results, enabling more efficient report generation.



Report sample

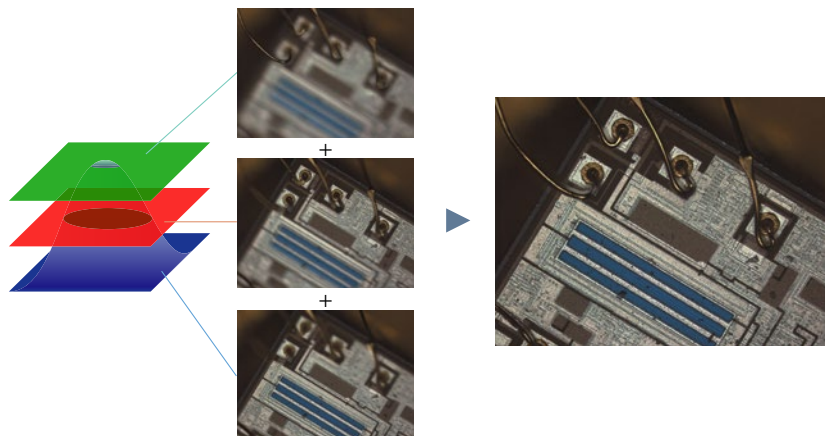
Multiple Image Alignment (MIA) (optional)

Tile multiple images to capture a single high-magnification, wide-area image. Because the images are tiled on the basis of coordinate data, the system is capable of producing highly reliable images.



Extend Focus Image (EFI) (optional)

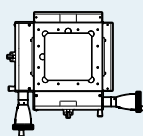
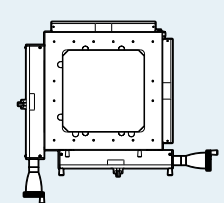
The EFI function is effective for obtaining images that are well-focused throughout on samples with an uneven, complex surface shape. Generate a single image with focal points aligned in all positions. Simply process multiple images with different focal point positions while moving the Z-axis, or use the motorized model for automated image composition.



Five STM7 suggested configuration provide Highly Reliable Modular System Concept Never in This Simplicity

		Manual Models	
		STM7-SF	STM7-MF



		STM7-CS100	STM7-CS200
Stage (X x Y)		 100 mm x 100 mm	 200 mm x 200 mm
Z-axis focus		Manual	
Observation method BF: Brightfield DF: Darkfield DIC: Differential interference contrast POL: Polarized light <small>*For objectives, please refer to the specification table of Page 19-20.</small>	Standard	BF or BF / DF	
	Option	DIC POL	
Measurement objectives Brightfield		<input type="checkbox"/>	
Focus navigator STM7-FN		<input type="checkbox"/>	
Autofocus unit STM7-AF		-	
Measurement support software STM7-BSW		<input type="checkbox"/>	
Measurement support software (Multiple Image Alignment /MIA and xtend Focus Image/EFI) STM7-ASW-ME		<input type="checkbox"/>	

: Option

STM7-LF

Motorized Models

STM7-MFA

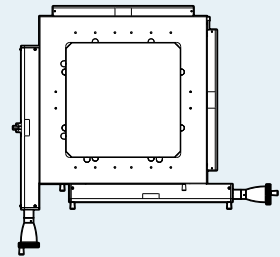
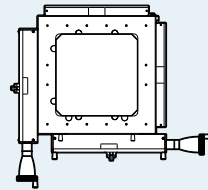
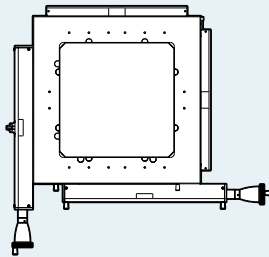
STM7-LFA



STM7-CS300

STM7-CS200

STM7-CS300



300 mm x 300 mm

200 mm x 200 mm

300 mm x 300 mm

Manual

Motorized

BF or **BF / DF**

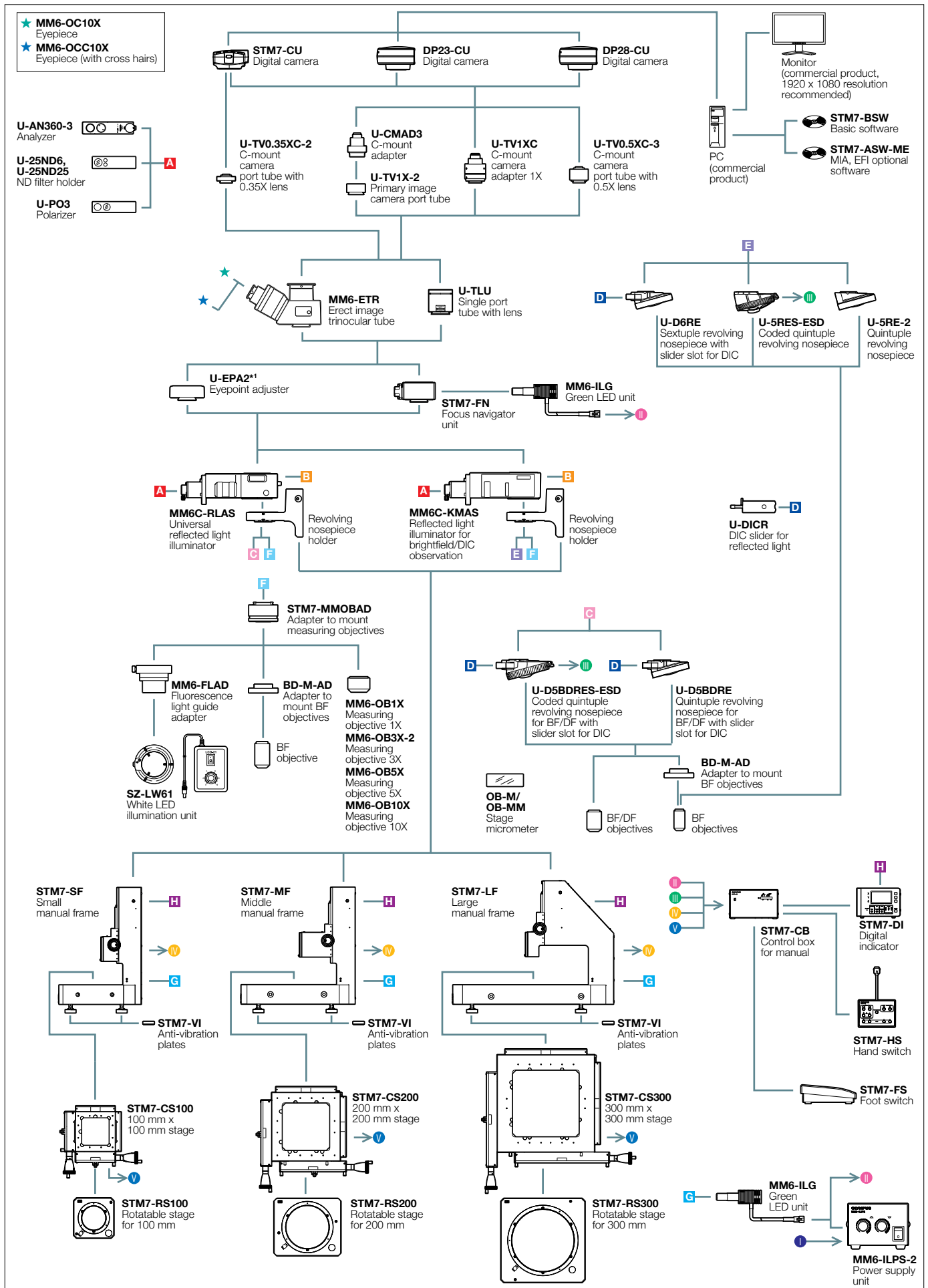
BF or **BF / DF**

DIC **POL**

DIC **POL**

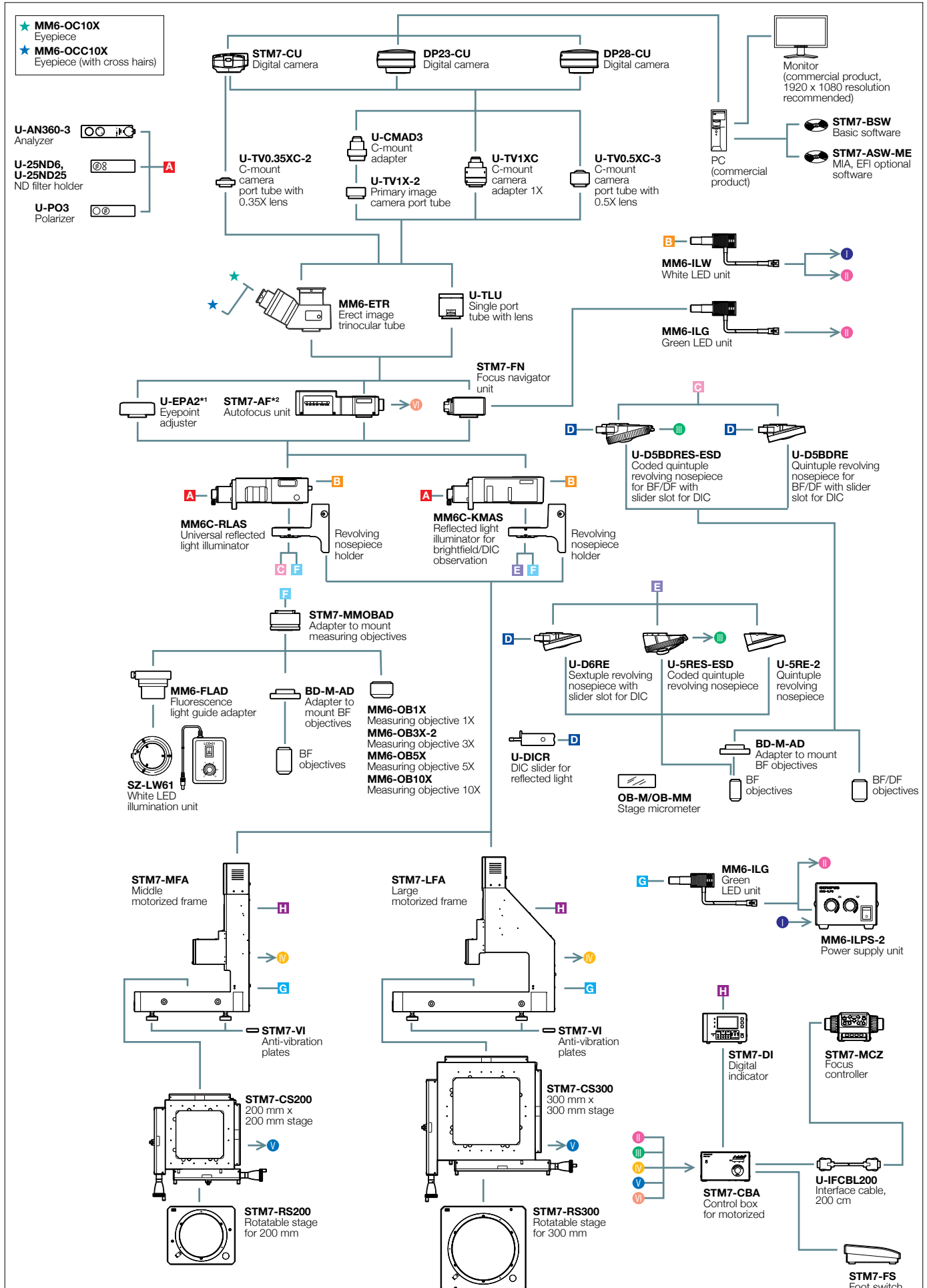
—

STM7-F System Diagram (Manual Model)



*1 STM7-LF frame combination only. Max. two mountable.

STM7-F System Diagram (Motorized Model)



*1 STM7-LFA frame combination only. Max. two mountable. *2 STM7-AF autofocus unit is a Class 1 laser product.

Specifications

STM7 SPECIFICATIONS MANUAL MODEL

		Small stage	Midsized stage	Large stage
Microscope body		STM7-SF	STM7-MF	STM7-LF
Focus	Vertical movement range	175 mm		145 mm
	Maximum measurable height	120 mm (with measurement objective) 175 mm (with metallurgical objective)		90 mm (with measurement objective) 145 mm (with metallurgical objective) ^{*1}
	Z-axis measurement resolution	0.1 μm		
	Z-axis drive method	Manual coaxial fine/coarse focusing knobs		
Illumination	LED illumination			
Observation tube		MM6-ETR Erect image trinocular tube (100: 0/0: 100)		
Eyepiece (F.N.22)		MM6-OCC10X (with cross hairs), MM6-OC10X		
Objectives	BF (Bright field)	MM6C-KMAS Illumination		
		U-5RES-ESD Nosepiece		
	BF (Brightfields) /DF (Darkfield)	MPLFL5X, 10X, LMPLFLN20X, 50X, 100X Metallurgical objectives		
		MM6C-RLAS Illumination		
		U-5BDRES-ESD Nosepiece		
		LMPLFLN5XBD, 10XBD, 20XBD, 50XBD, 100XBD Metallurgical objectives		
LED unit	White color (reflected)	MM6-ILW		
	Green color (Transmitted)	MM6-ILG		
Stage		STM7-CS100	STM7-CS200	STM7-CS300
	Measuring range	X-axis 100 mm, Y-axis 100 mm	X-axis 200 mm, Y-axis 200 mm	X-axis 300 mm, Y-axis 300 mm
	Measurement accuracy (L: measuring length)	(3 + 2L/100) μm	(3 + 4L/200) μm	(3 + 6L/300) μm
	Accuracy assurance weight	6 kg	10 kg	15 kg
Counter		STM7-DI		
	Number of axes	Three		
	unit	μm/mm/inch/mil		
	Minimum resolution	0.1 μm		
	Control box	STM7-CB		
	Hand switch	STM7-HS		
	Focus controller	-		
Interface cable	-			
Anti-vibration plates		-	STM7-VI	
Power cable		UYCP		
Dimensions (W x D x H)		466 x 583 x 651 mm	606 x 762 x 651 mm	804 x 1024 x 686 mm
Weight		84 Kg	152 Kg	277 Kg
Power consumption		100-120/220-240 V ~ 50/60 Hz 0.3 A/0.2 A	100-120/220-240 V ~ 50/60 Hz 0.3 A/0.2 A	100-120/220-240 V ~ 50/60 Hz 0.3 A/0.2 A

*1 When using the large frame STM7-LF/STM7-LFA, a specimen whose height is 100 mm or less can be placed at the position backward from the light axis by 180 mm or more.

OBJECTIVES WORKING DISTANCE

Objective	Magnifications	Magnifications							
		1X	3 X	5 X	10 X	20 X	50 X	100 X	
Measuring objectives	MM6-OB series	59.6	76.8	65.4	50.5	-	-	-	
	MPLFLN series	Brightfield	-	-	20.0	11.0	3.1	1.0	1.0
Metallurgical objectives	LMPLFLN series	Long working distance	-	-	22.5	21.0	12.0	10.6	3.4
	MPLFLN-BD series	Brightfield/darkfield	-	-	12.0	6.5	3.0	1.0	1.0
	LMPLFLN-BD series	Brightfield/darkfield, long working distance	-	-	15.0	10.0	12.0	10.6	3.3

STM7-BSW SYSTEM REQUIREMENTS

Item	
CPU	Intel Core i3 Processors 3 GHz or more with an STM7-CU camera, an Intel CORE i5 or equivalent or higher with DP23/DP28 cameras
Memory	4 GB or more with an STM7-CU camera, 8 GB or more (16 GB recommended) with DP23/DP28 cameras.
HD available space	100 GB or more hard disk space for installation SSD hard disk is recommended for high speed image acquisition
Graphic card	Graphic card available for resolution 1980 x 1080 and 32bit color
Drive	DVD Drive
PC input device	2-button mouse (3-button mouse with a wheel is recommended.) Keyboard
Operating system	Microsoft Windows 10 Pro/Pro for Workstations (64bit)
Web browser	Internet Explorer 11

* Microsoft Office 32bit or 64bit 2013/2016/2019/2021/365(SAC) are also supported.

STM7 SPECIFICATIONS MOTORIZED MODEL

		Midsized stage	Large stage
Microscope body		STM7-MFA	STM7-LFA
Focus	Vertical movement range	175 mm	145 mm
	Maximum measurable height	120 mm (with measurement objective) 175 mm (with metallurgical objective)	90 mm (with measurement objective) 145 mm (with metallurgical objective) *1
	Z-axis measurement resolution	0.1 μm	
	Z-axis drive method	Motorized ● FOCUS button: Coarse movement speed 8mm/s (max.) ● Fine/coarse focusing knob: Fine focusing speed can be selected from 4 values (800 μm, 400 μm, 100 μm, 50 μm)	
Illumination	LED illumination	White: for reflected light illumination, green: for transmitted light illumination	
Observation tube		MM6-ETR Erect image trinocular tube (100: 0/0: 100)	
Eyepiece (F.N.22)		MM6-OCC10X (with cross hairs), MM6-OC10X	
Objectives	BF (Bright field)	MM6C-KMAS Illumination	
		U-5RES-ESD Nosepiece	
	BF (Brightfields) /DF (Darkfield)	MPLFL5X, 10X, LMPLFLN20X, 50X, 100X Metallurgical objectives	
		MM6C-RLAS Illumination	
	U-5BDRES-ESD Nosepiece		
	LMPFLN5XBD, 10XBD, 20XBD, 50XBD, 100XBD Metallurgical objectives		
LED unit	White color (reflected)	MM6-ILW	
	Green color (Transmitted)	MM6-ILG	
Stage		STM7-CS200	STM7-CS300
	Measuring range	X-axis 200 mm, Y-axis 200 mm	X-axis 300 mm, Y-axis 300 mm
	Measurement accuracy (L: measuring length)	(3 + 4L/200) μm	(3 + 6L/300) μm
	Accuracy assurance weight	10 kg	15 kg
Counter		STM7-DI	
	Number of axes	Three	
	unit	μm/mm/inch/mil	
	Minimum resolution	0.1 μm	
	Control box	STM7-CBA	
	Hand switch	—	
	Focus controller	STM7-MCZ	
	Interface cable	U-IFCBL200	U-IFCBL200
Anti-vibration plates		STM7-VI	
Power cable		UYCP	
Dimensions (W x D x H)		606 x 762 x 811 mm	804 x 1024 x 844 mm
Weight		159 Kg	284 Kg
Power consumption		100 – 120/220 – 240 V ~ 50/60 Hz 0.3 A/0.2 A	100 – 120/220 – 240 V ~ 50/60 Hz 0.3 A/0.2 A

*1 When using the large frame STM7-LF/STM7-LFA, a specimen whose height is 100 mm or less can be placed at the position backward from the light axis by 180 mm or more.

Option	Objectives	Measurement objectives	MM6-OB series (1 X/3 X/5 X /10 X)	Rotatable stage	For 100 x 100 mm	STM7-RS100
	Focus navigator	Focus navigator unit	STM7-FN		For 200 x 200 mm	STM7-RS200
		Green LED unit	MM6-ILG		For 300 x 300 mm	STM7-RS300
	Autofocus	Autofocus unit	STM7-AF	ND filter	ND filte (Transmittance 6 %)	U-25ND6
	DIC	U-DICR DIC slider for reflected light	U-DICR		ND filte (Transmittance 25 %)	U-25ND25
	Software/Camera*1	Measurement Support Software	STM7-BSW	DIC	DIC/Polarizer	U-PO3
	Camera	Digital camera Low	STM7-CU		DIC/Analyzer	U-AN360-3
		Digital camera Middle	DP23-CU		Software	MIA, EFI optional software
		Digital camera High	DP28-CU	Foot switch		STM7-FS
	TV adapter	C-mount camera port tube with 0.5X lens	U-TV0.5XC-3	Power supply unit		MM6-ILPS-2
C-mount camera port tube with 0.35X lens		U-TV0.35XC-2	Stage micrometer		OB-M/OB-MM	

*1. Supported cameras vary depend on the version of STM7-BSW.

Ver.1.3.3 or earlier: STM7-CU. Ver.1.4.1 or later: DP23/DP28

Accessories



STM7-AF Autofocus

The autofocus unit for the STM7 series that delivers excellent reproducibility and rapid focus.



STM7-FN Focus navigator

The focus navigator delivers highly reproducible height measurement by projecting a pattern within the field of view and identifying vertical deviations.



U-DICR DIC slider

The DIC slider provides topographic information about the sample with options to maximize contrast or resolution.



Coded Revolving Nosepiece

Combining a coded revolving nosepiece with a digital camera lets you display the objective magnification on-screen during observation and allows you to record that magnification. This convenient feature allows information on your sample and the objective's magnification to be recorded at the same time when recording a sample.



STM7-FS/ Foot Switch

Enables hands-free transmission of data, allowing operators to complete measurement without taking hands off the X and Y handles.



SZ-LW61/ White LED Illumination Unit

This light-weight, space-saving design model provides a long operating life and low power consumption. The cost-effective LED illumination unit is also free from the flickering and brightness fluctuation.

Rotatable Stage

Enables easy parallel alignment of sample.



STM7-RS100
for STM7-CS100 100 mm x 100 mm stage



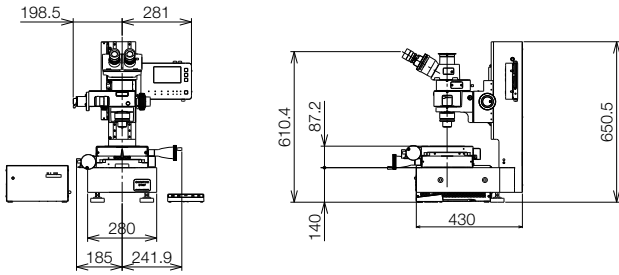
STM7-RS200
for STM7-CS200 200 mm x 200 mm stage



STM7-RS300
for STM7-CS300 300 mm x 300 mm stage

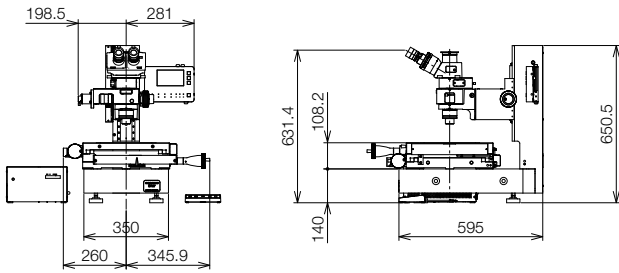
Dimensions

STM7-SF



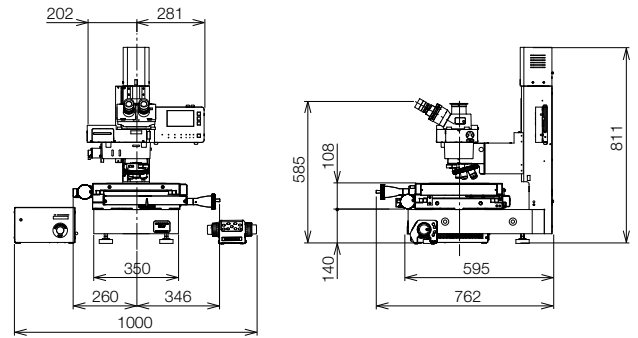
Unit: mm

STM7-MF



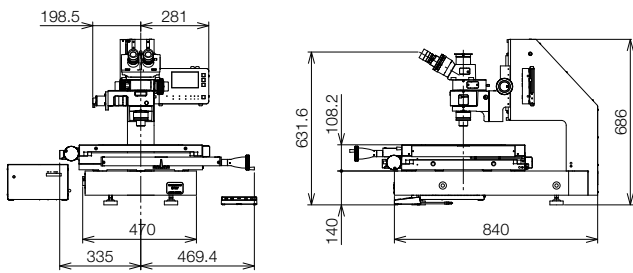
Unit: mm

STM7-MFA



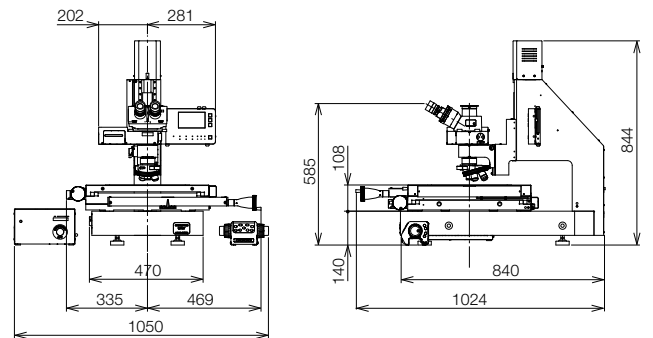
Unit: mm

STM7-LF



Unit: mm

STM7-LFA



Unit: mm

- **EVIDENT CORPORATION is ISO14001 certified.**
- **EVIDENT CORPORATION is ISO9001 certified.**
- This product is designed for use in industrial environments for the EMC performance. Using it in a residential environment may affect other equipment in the environment.
- All company and product names are registered trademarks and/or trademarks of their respective owners. Evident, the Evident logo, and PRECIV are trademarks of Evident Corporation or its subsidiaries.
- Images on the PC monitors are simulated.
- Specifications and appearances are subject to change without any notice or obligation on the part of the manufacturer.
- Illumination devices for microscope have suggested lifetimes. Periodic inspections are required. Please visit our web site for details.